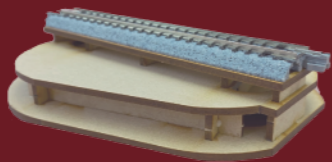
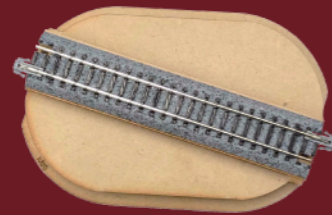


**When you hold an event called MINI DIORAMA CIRCUS, please use the MINI DIORAMA BASE (2 types) product version.**

**24-051 MINI DIORAMA BASE  
STRAIGHT 124MM KIT  
WITH TRACK**

- Straight line 124 mm
- Line fixing screws
- Laser Cut Diorama base
- Additional Pier Parts
- Track Run Off Parts
- Wheel Brake Parts
- Building Limit Measurement Tool
- Instruction manual



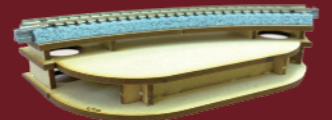
Sample work



Product packaging

**24-052 MINI DIORAMA BASE  
CURVE R183MM KIT  
WITH TRACK**

- Curve line R183mm
- Line fixing screws
- Laser Cut Diorama base
- Additional Pier Parts
- Track Run Off Parts
- Wheel Brake Parts
- Building Limit Measurement Tool
- Instruction manual



Sample work



Product packaging



**Contact Us and Apply**

**KATO Europe A/S Kim Nannestad**

**✉ [mdc@katoeurope.dk](mailto:mdc@katoeurope.dk)**

Please be sure to include the name of your club and your name in the subject line, as 'KATO OFFICIAL MDC'.

The sample or purchased mini diorama base will be shipped from KATO Europe A/S.

KATO OFFICIAL MINI DIORAMA CIRCUS Organiser : KATO Europe A/S

Cooperative companies : Gaugemaster Controls Ltd.

**KATO OFFICIAL**

Let's

Build a

**CIRCUS**

TOGETHER!

With KATO

**THIS GUIDE BOOK  
FOR MODEL RAILWAY CLUB**

This is an introduction to the workshop using the mini diorama base and the official event MINI DIORAMA CIRCUS!

Have you heard of KATO's 'MINI DIORAMA CIRCUS'? It has been running at events in the UK since 2023, and some of you may have seen it in person. KATO MINI DIORAMA CIRCUS started in Japan in 2021. As you know, in the world of model railways, building a permanent layout is one way to create a landscape where you can run your favourite trains. A wonderful hobby, but doing this takes time, money, space and may even require permission from your family. Sometimes those hurdles put people off creating dioramas.

But what if you could create your own diorama in a space small enough to fit on your desk? Imagine a compact but sturdy diorama base ideal for beginners to make their own dioramas? No matter how small it is, it has a proper N Gauge track so that you can enjoy the scenery and depth by running small locomotives and cars. If you connect eight curved dioramas, it makes a circle layout. The Mini Diorama Base was created to encourage beginners to create an own diorama with UNITRACK and its unique UNIJOINER.



## 1. Overview

At the MINI DIORAMA CIRCUS (MDC) events in Japan, over 400 dioramas from all over Japan have come together into MINI DIORAMA CIRCUS RINGS. Railway model shops in many cities play a major role in this event, the participating model shops take care of the mini dioramas that have been made and brought in by local modellers, and then send them to KATO's head office in Tokyo. At the event, KATO's employees and local model railway shop employees connect all the mini dioramas, and the CIRCUS begins.



Model Rail Contest in Tokyo

Well, here in the UK, there are many model railway clubs in various locations, and I think that all of them are working very energetically. This is very unusual and very enviable for Japanese modellers. There are not as many private model railway clubs in Japan comparing to UK. Therefore, for the future development of your clubs and model railway culture, KATO sincerely hope that you will promote the MDC, which can attract the interest and attention of younger generation and women.



## 2. KATO OFFICIAL MDC Method

a) We will send you one Mini Diorama Base Straight and one Mini Diorama Base Curve as a gift if you contact to KATO EUROPE A/S.

b) KATO EUROPE will offer you directly with a special price for those Mini Diorama Bases if your club is having own workshops.

• The UNITRACK and screws for fixing the rail are included.



Every year, many parents and children take part in the diorama workshops that KATO holds in Japan.

It is easier to assemble than the MINI DIORAMA BASE used in MDC. For this reason, the top surface is flat.

c) KATO EUROPE will provide you with the brochures and leaflets for promoting MDC and encouraging workshop.

d) KATO will list to advertise your club's event at the KATO official SNS if you prefer to promote MDC workshop and purchase Mini Diorama Bases from KATO EUROPE directly.

e) KATO EUROPE will send you a sign plate that you can use when holding an MDC.

f) KATO EUROPE will provide you MDC Pin Badges free of charge as a gift to participants.



g) We encourage you having a train running session after completing your Mini Diorama Making Workshop to connect all of them. To run trains on Mini Dioramas as a Circus, you would need UNITRACK FEEDER TRACK (20-041) or UNITRACK TERMINAL (24-818) and a power supply controller (22-018). KATO EUROPE will offer you with a special price if you need to buy one.



### 3. Anything Goes!

There are a few rules to follow when making MDC works, but if you follow them, you'll be an artist in no time!



#### Points to note ⚠️

a) Please be careful not to exceed the Loading Gauge! After you have connected all the Mini Dioramas into a circle and want to run a model train, make sure to check the size of the train you are running before placing trees and other objects. Additional care is needed for curved module base for overhanging of locomotives and cars.



b) Please be sure to use KATO's Mini Diorama Base and UNITRACK. As this is an official event, please refrain from using your own bases or track made by other companies. You are free to expand or modify your base if you wish.



### 4. From an event to watch to an event to take part in.

The events that KATO holds in Japan are mainly for junior high and high school students. As many parents and children visit the venue, we also hold a paid workshop for beginners, which is very popular. You can teach the basics of diorama making, such as painting the ground and making trees, with the view of earning STEAM education. Actions that are second nature to us, such as drawing, cutting and bending, are very new and exciting for them, and will leave them wanting to try making something bigger next time! The motivation to create things can only be born through using your hands. If you would like to hold a workshop for beginners at your club, please contact to KATO Europe.



*You will spend about an hour making a coaster-sized miniature diorama.*



*Examples of works using the base for workshops.*



*Even if you use the same materials, each finished piece will be different.*



MORE INFO



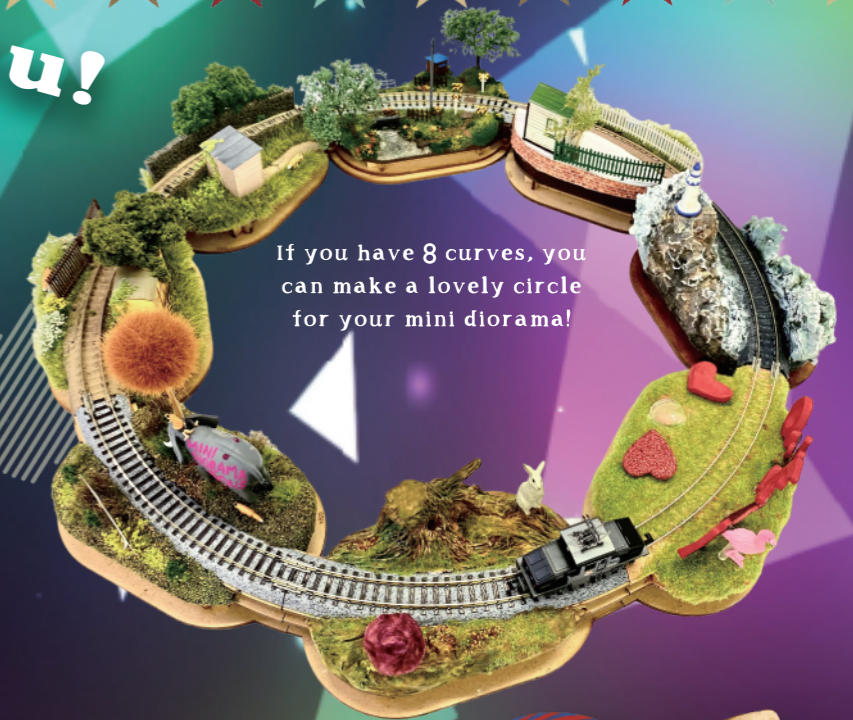
KATO MDC WEB

I will cast a spell on you!

KATO OFFICIAL

MINI DIORAMA

CIRCUS



If you have 8 curves, you can make a lovely circle for your mini diorama!

ART is LOVE

As Steve Jobs said, 'The only way to do great work is to love what you do.' Love is also important in diorama making. No matter how outlandish the worldview of a diorama, if it is carefully created right to the end, it will become a work that captures the hearts of those who see it. On the other hand, you won't be able to move anyone with a work that you've made 'somehow' and without putting your heart into it. It is not a small technical skill that gives soul to inorganic objects, but how much passion is poured into them and how they are made with love.



Let's display the works so that they look more attractive and fun.

Children who have experienced making Mini Dioramas may eventually go on to make full-scale railway modules. They may like the detailed work involved and become absorbed in making the vehicles. You can make small dioramas using your senses, but if you want to create realistic scenes while considering the limits of the vehicles, you will need to have some knowledge of engineering and mathematics. Mini Dioramas are a great way to get started, but like model trains, if you get hooked, you'll find yourself in a world of deep hobbies.

With their parents' permission and observation, once your student created his/her work, we encourage you to help them posting it on Rail-Navi, the SNS for railway and model railway fans run by KATO. This is their chance to connect with fans not only in the UK, but around the world.

Rail-Navi also offers listing your work and memories as non-public information.

As a teacher or as club member, you are also encouraged to list yourself as a modeller and introduce your work and club activities to the world.

